



# ALUNA BIFOLD

Luxury super-slim aluminium bifolding doors by



NWROOFTECH



**1.1**  
W/M2K  
TRIPLE  
GLAZED

**1.4**  
W/M2K  
DOUBLE  
GLAZED

**107MM**  
MARKET  
LEADING  
SIGHTLINES

**PAS24**  
COMPLIANT  
2022

ENERGY  
RATED  
**B**





# ALUNA Bifold

The ALUNA bifold system offers a versatile, slimline system for single doors, French doors and bifolding doors and windows.

As an enhancement on the known and loved BF73 bifold system, the super-slim profile sections of the ALUNA bifold system minimise the visible framework and maximise the glass area, with market-leading sightlines of just 107mm.

Achieving a DER energy rating of B and a new PAS24:2022 certification, the bifolds are designed to the most up to date standards to be the best the market has to offer.

The ALUNA Bifold is part of a collection of products brought to you by Alunet Systems, bringing their expertise and knowledge into a range unbeaten on quality.

- ❑ Super-slim sash
- ❑ Market-leading sightlines of just 107mm
- ❑ Sash extension
- ❑ 'Click & Forget' clip in bead
- ❑ Integrated Cill
- ❑ U-values as low as 1.1 triple glazed & 1.4 double glazed
- ❑ Energy rated B (DER)
- ❑ PAS24:2022 compliant



Sleek

---

Strong

---

Secure

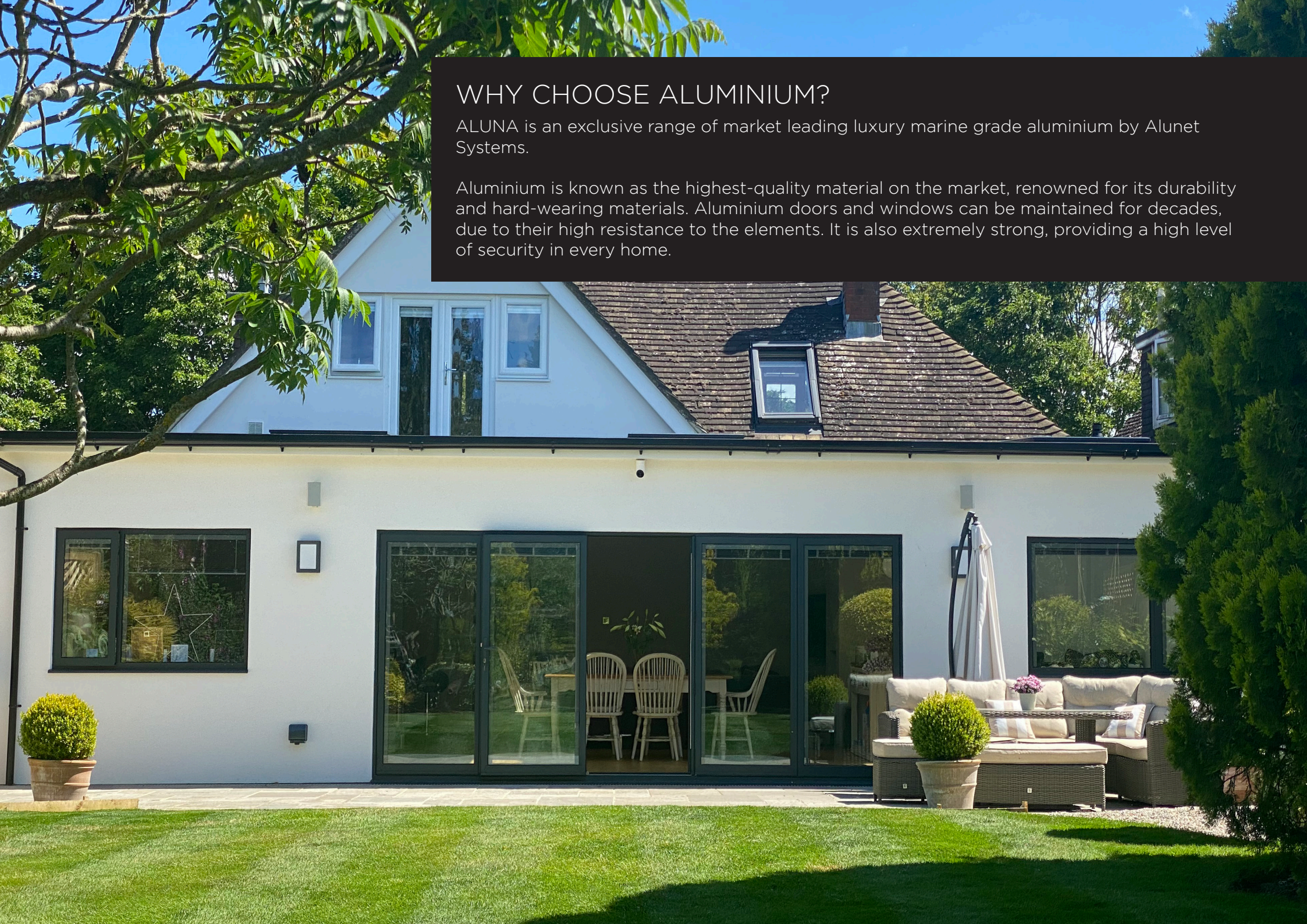
Luxury marine grade aluminium bifolding doors designed to a high specification; unrivalled strength and durability, thermally efficient, safe and secure, all without compromising Aluna's highly attractive modern style.



## WHY CHOOSE ALUMINIUM?

ALUNA is an exclusive range of market leading luxury marine grade aluminium by Alunet Systems.

Aluminium is known as the highest-quality material on the market, renowned for its durability and hard-wearing materials. Aluminium doors and windows can be maintained for decades, due to their high resistance to the elements. It is also extremely strong, providing a high level of security in every home.







ENERGY  
RATED  
**B**

**PAS24**  
COMPLIANT  
2022

**107MM**  
MARKET  
LEADING  
SIGHTLINES

**1.4**  
W/M2K  
DOUBLE  
GLAZED

**1.1**  
W/M2K  
TRIPLE  
GLAZED



# New & Improved System

The NEW ALUNA Bifold system showcases new and improved features of the known and loved BF73 system.

NEW slimmer profile sections boast sightlines of just 107mm with market-leading sash sizes up to 1200mm wide and 3000mm high per pane. The ALUNA Bifold can also be manufactured with up to 7 leaves each way (14 in total).

Enjoy silky smooth operation due to engineering-grade hardware plus improved thermal performance with U-values as low as 1.1 U/m<sup>2</sup>K. Also benefitting from high security, compliant to PAS24:2022 standards, the ALUNA Bifold system is ideal for opening spaces up to the outdoors and creating a visually stunning addition to any property.

The new sash extension is another improved feature to the ALUNA Bifold, offering ease of fabrication and requiring fewer gaskets, enhancing ease of operation and experience.

Plus, try our PAS24:2022 certified 'Click & Forget' clip-in bead for quicker installations!

**ENERGY** **ALUNA**

Manufacturer: **ALUNA**  
Model: **ALUNA Bifold**

A B C D E F G

B

The image shows a performance graph with seven horizontal bars labeled A through G, representing energy efficiency levels. Bar A is green, B is light green, C is yellow-green, D is yellow, E is orange-yellow, F is orange, and G is red. A white arrow labeled 'B' points to the right, indicating the system's performance level.

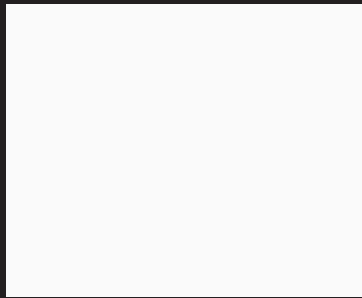




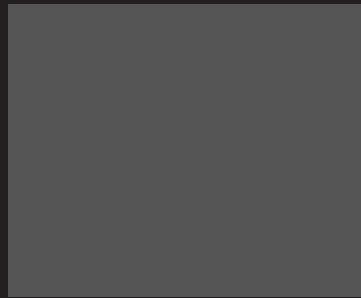
# Colours

Our ALUNA Bifold products are available in any RAL colour upon request.

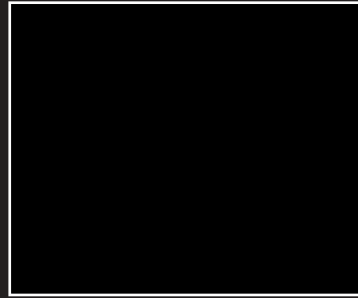
The standard colours that we have in stock are Grey 7016 (Matte), Black (Matte), White 9016 (Gloss), Grey 7016 (Matte) on White 9016 (Gloss) and Black 9005 (Matte) on White 9016 (Gloss).



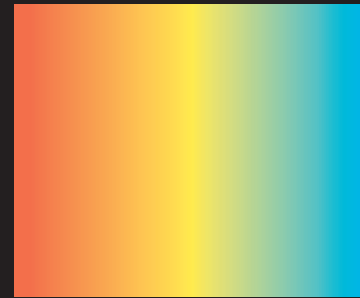
White  
RAL9016



Anthracite Grey  
RAL7016



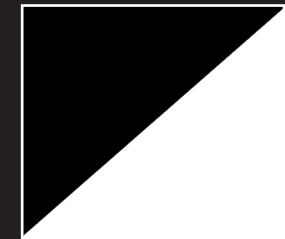
Black  
RAL9005



Bespoke RAL  
Colour



Grey Out/  
White In



Black Out/  
White In



# ALULOCK

## LOCK, KEEP AND HANDLE

The ultimate security kit for ALUNA Bifolds.

ALULOCK security kit combines a euro profile cylinder as standard, with the option to upgrade to the Ultion 3-star barrel, with the Brisant Sweet Handle and an exclusively designed Duplex Double-Hook Lock, providing a solid 6-point locking system for additional security.

### THE SWEET HANDLES

Safe, Stylish & Durable

The Ultion Sweet Handles are a popular upgrade due to their impressive durability as part of the ultimate security kit. These stunning handles are highly secure, and can stop gripping tools designed to snap off handles during break ins.

Carrying multiple coatings of brass and nickel to ensure robust performance, with a 10-year anti-corrosion guarantee for peace of mind.



Available in a range of colours including: black, white, grey, chrome, stainless steel, gold and rose gold.

### STAINLESS STEEL HANDLE

316 Marine Grade Stainless Steel

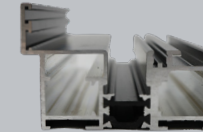
The stainless steel handle upgrade has been designed by experts for enhanced performance and durability creating one of the highest quality door handles on the market.



The suited handle is made from 316 marine grade stainless steel, compared to the industry-standard of 304, giving it long-term resistance to corrosion.

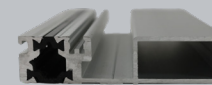
## Thresholds

The ALUNA Bifold, French Door & Single Door can all be designed with the following threshold options:



### Standard threshold

A 55mm threshold that acts as a full weather break.



### Low threshold

A 20mm threshold for a seamless look.



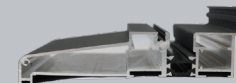
### Low threshold with rebate

A 20mm rebate attached to a low threshold.



### Low threshold with ramps

Ideal for homes that need additional accessibility.



### Integrated cill

Provides full weather rating and maximises the overall sash height.

### Universal aluminium cills

Compatible with most systems, directing water way from brickwork (available as 90mm, 150mm, 190mm & 230mm).

# Whole House Luxury Made Easy!

## **Let There Be Light The ALUNA Way!**

Whether it's a single door, French door or bifolding door or window, they can all be fabricated from the same market leading luxury ALUNA Bifold system.

It's so versatile that it can cater for projects that call for shaped frames, fixed frames, sidelights, astragal bars, blinds in glass, and can even be used as an entrance door with optional panel inserts.

All ALUNA Bifold products can be finished in several glazing options to suit any property, including:

- Double & triple glazing
- Integral blinds
- Heritage look astragal bars & transoms
- Solid panel inserts

All sashes with the bifolding system are available in 2 profile designs: square and textured square\*. Choose square for a classic look or textured square for a more contemporary alternative.

*\*Textured square only available in 7016 anthracite grey*

Also new to the bifold system is our door restrictor, preventing the door from opening over 90 degrees. Easy to install, the arm can also be detached for full opening of the door.

## **Easy Installation**

The ALUNA bifold system has been designed to be quick and easy to install. The system offers an optional adjustable jamb feature for maximum adjustability of +/- 4mm either side during installation and is easily managed with an allen key.

## **Floating Corner Post**

The floating corner post option enables right-angled BF73 bifolding doors, including the return, to open out fully, with the option of a fixed corner for the ultimate wow factor! (Structural support needs to be in place.)

## **Weather Resistance**

Excellent weather sealing is achieved using specially designed perimeter seals, with the option of weather piles for lower thresholds. The weather-tightness has been tested to British standards.

## **Low Maintenance**

Our low-maintenance aluminium doors are strong, durable and corrosion-resistant. Unlike timber, they don't need painting or staining to keep them weatherproof, and they won't rust or corrode. They will also never rot, peel or flake.





**10**  
**YEAR**  
GUARANTEE

**1.4**  
W/M2K  
DOUBLE  
GLAZED

**1.1**  
W/M2K  
TRIPLE  
GLAZED

ENERGY  
RATED  
**B**

## TECHNICAL DETAILS AT A GLANCE

- Market-leading maximum sash sizes up to 1200mm x 3000mm
- Maximum vision – minimal sight lines of only 107mm or 120mm
- Maximum security- PAS24:2022 certification
- U-values as low as 1.1 with triple glazing and 1.4 with double glazing (U W/m2k)
- Maximum weatherproofing – tested to BS6375 Part 1:2009
- Single or dual colour. Factory powder coated to marine quality as per Qualicoat regulation
- 120kg per door leaf provided for the openings
- Engineering-grade running rollers for a smooth and silky opening and closing operation
- Trickle vents can be added

# ALUNA BIFOLD

Luxury Aluminium By



**NWROOFTECH**

01704 222 707

[info@nwrooftech.co.uk](mailto:info@nwrooftech.co.uk)

[www.nwrooftech.co.uk](http://www.nwrooftech.co.uk)



NW Rooftech  
Unit 5 Crossens Way  
Southport  
Lancashire  
PR9 9LY